

PEINTAFLOR

INSTALLATION INSTRUCTIONS

Our Wood Rock 55 is to be applied indoors on a subfloor that is clean, smooth, flat, regular, level¹, solid and dry, made of concrete (with moisture barrier), wood or ceramic tiles. It can also be applied to PVC, lino, laminate, and parquet if these coatings are bonded to the subfloor. If your subfloor is made of materials other than those mentioned above, remove it.

Be sure to remove any residues of plaster, coating, paint, glue, etc., and repair any defects before starting the installation of our Wood Rock 55.

The room temperature should be between 20°C and 30°C for optimal installation (before, during and after installation). If our Wood Rock 55 has been exposed to lower or higher temperatures before laying, acclimatise it in the installation room so that the planks acclimatise to its temperature. Be sure to leave the planks in their original packaging unopened for 12 hours for proper acclimatisation.

NB: if our Wood Rock 55 is exposed to lower or higher temperatures after installation, defects may appear on the floor due to its contraction or expansion. Always make sure that the temperature does not fall below 10°C and does not exceed 40°C.

This flooring is placed in floating installation only. Therefore, make sure to leave an 8-mm expansion space between fixed components (walls, etc.) and your flooring to allow the latter to follow the movements of the ground without impact. If you need to place Wood Rock 55 around line pipes, be sure to drill an opening 20 mm wider than the width of the pipes.

For large areas (greater than 20 m), be sure to leave an expansion joint every 13 meters, whether in length or width.

¹ Levelling of maximum 5 mm within a radius of three meters.

Disclaimer:

- ◆ Check the condition of the planks before cutting and/or installing. If they have any defect, contact us (info@peintagone.com) and do not handle them.
- ◆ A defective subfloor may cause wear or even breakage of the locking system. A subfloor is considered defective when subjected to excessive vertical movement, i.e. a subfloor with loose fasteners/planks or a subfloor that grinds, has cavities, is inflated or uneven. Repair the excessive vertical movement with nails and/or screws before installing our Wood Rock 55.
- ◆ It is not recommended to install our Wood Rock 55 over a radiant electric heating system due to rapid and abrupt temperature changes, which can damage the floor. Note that installation on this type of heating system will not be covered by the manufacturer's warranty.
- ◆ It is advisable for underfloor heating systems using water to maintain an ambient temperature of 18°C during floor acclimatisation, during installation and for the following 72 hours. After this period, the floor heating can be increased by 3°C per day to the desired temperature, taking care not to exceed 27°C.

Implementation

- Start laying with a full plank in the left corner of the room. Position the first plank with the tongue on the wall side. Then continue by laying the first row in a straight line (tongue always placed towards the wall). If you start with a row of planks not cut across the width, you need to cut their tongue for the expansion space (8 mm). Leave the cut side on the wall side.

To cut your planks, use a cutter and a square. Cut from the top of the plank. Then fold it down to separate the components. You can also use a tabletop circular saw for your cuttings. A vinyl tile cutter is also an option, but only to cut the ends.

- While making sure to keep the alignment, assemble the first row by tying together the edges on the ends. To do this, insert the tongues into the grooves, maintaining an angle of 20 to 30° relative to the ground. Apply pressure inwards and downwards until the planks lock (**see pictures 1 and 2**).

Consider placing shims between your first row and the wall to hold the expansion space in place.

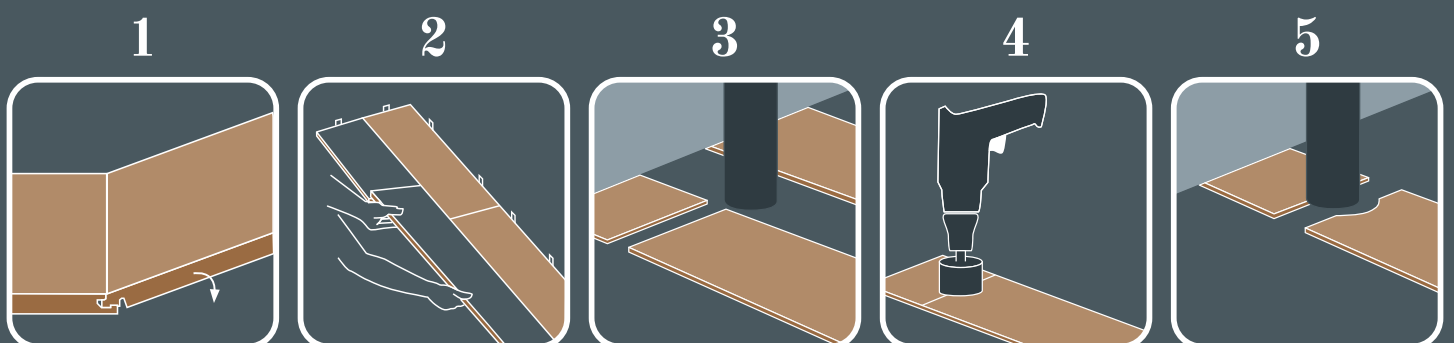
- Proceed with the placement of the second row starting with a third of the plank. Place the cut side on the wall side and insert the tongues into the grooves of the planks of the first row following the same locking method used for the first row. Always make sure to first lock the planks to their width before locking them lengthwise. Remember to maintain the expansion space on either side of the row.

For a good locking of the planks between each other: you may have to lift the relevant planks slightly. Then use a hammer or rubber mallet and gently hit the planks from the end with a groove. **Never hit the end with a tongue.**

It is imperative not to leave space between the long sides of the planks as even a small spacing can compromise the entire installation.

- Continue with the third row, this time placing two thirds of plank always with the cut end on the wall side. Continue laying ensuring that the joints across the width of the planks are approximately 30 mm offset from the previous row.

Tip: for a random layout, plan your cuttings so that you can reuse your scraps at the beginning of the next row. Keep in mind to always place the cut end on the wall side and provide the expansion space.



Focus areas

◆ Door linings

Place our Wood Rock 55 under the door frame. To do this, we advise you to start installation on the side of the room where the door is located. Create your first row using the method described above and slide it under the door frame.

◆ Bathroom

If there is a toilet, be careful not to place the Wood Rock 55 under the bowl, but rather around it. When placing around the bowl, allow an expansion space of 3.5 mm.

Finish the installation in this room by finishing the expansion spaces around the bathtub, shower, toilet, etc. with a silicone seal to prevent water infiltration under the planks.

◆ Piping or vertical component

Plan your installation so that your pipes or vertical components are aligned at the exact location of the junction in width of two planks. Make your cuttings by first locking your two planks across the width and then using a drill bit or a hole saw depending on the diameter to be provided.

Drill a larger diameter of 20 mm for the expansion space between your planks and the piping (**see pictures 3, 4 and 5**).

◆ Skirting boards and mouldings

These components must be placed directly on the floor. Stick them to your walls and do not attach them to Wood Rock 55. If glue is used, immediately remove any castings and residues with a suitable product.

◆ Heavy objects

Although Wood Rock 55 exhibits high strength, do not slide heavy objects over it. Properly protect your floor before moving any heavy objects. Remember to protect your Wood Rock 55 by placing felts on the feet of your furniture.

Tips & tricks

◆ On the first, or last, row of your flooring, always place a plank 50 mm wide.

◆ Direct the planks towards the main light source, i.e. perpendicular to it.

◆ In damp rooms and although our Wood Rock 55 is already equipped with an underlayment, it is strongly recommended to apply a second that is waterproof to avoid any risk of damage to the subfloor (water can infiltrate through the joints of Wood Rock 55 even if the latter is water resistant).

◆ For a heterogeneous and natural effect, mix the planks of different batches so that the variations of shades (lighter and darker) are distributed and not placed next to each other.

◆ For flooring maintenance, do not use abrasive cleaning products, bleach, wax or oil.